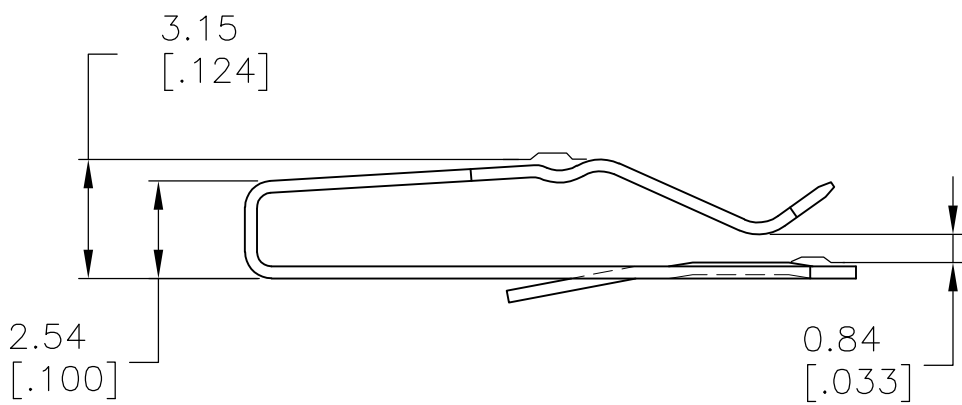
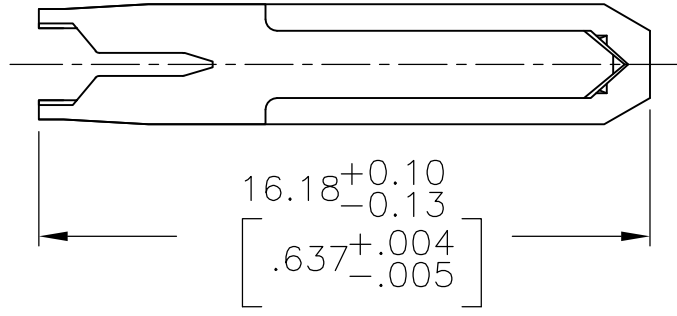
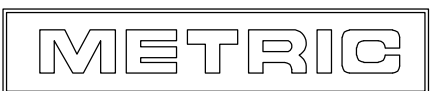


LOC	DIST	REVISIONS					
CM	00	P	LTR	DESCRIPTION	DATE	DWN	APVD
		G		ECO-07-025576	31OCT07	KW	DB



TIN	640633-3
FINISH	PART NO

MATERIAL	FINISH
0.3 (.012) THK COPPER ALLOY	MATTE TIN 0.00203(.000080) MIN THK



THIS DRAWING IS UNPUBLISHED. ALL RIGHTS RESERVED. BY TYCO ELECTRONICS CORPORATION. COPYRIGHT -

DIMENSIONS: mm [INCHES]	DWN	25OCT2005	MATERIAL	FINISH
	BSV		-	-
TOLERANCES UNLESS OTHERWISE SPECIFIED:	CHK	25OCT2005	Tyco Electronics Corporation Harrisburg, PA 17105-3608	
	D. BOSSI			
0 PLC ± - 1 PLC ± - 2 PLC ± - 3 PLC ± .13 (.005) 4 PLC ± - ANGLES ± -	APVD	25OCT2005	CONTACT, 22 AWG WIRE, LOOSE PIECE, MTA 156	
	D. BOSSI			
	PRODUCT SPEC	-	NAME	RESTRICTED TO
	APPLICATION SPEC	-	CONTACT, 22 AWG WIRE, LOOSE PIECE, MTA 156	
	WEIGHT	-	SIZE	RESTRICTED TO
			A4	
CUSTOMER DRAWING			CAGE CODE	RESTRICTED TO
			00779	
			DRAWING NO	RESTRICTED TO
			G-640633	
			SCALE	REV
			5:1	
			SHEET	1 OF 1